

2015 Alliance Management Institute



Certified to Change the World



Official CNP Starter Kit

CONTENTS

About the Alliance Management Institute.....	3
AMI 2015 Theme.....	4
AMI 2015 in Salt Lake City.....	5
Travel Information.....	6
Registration.....	7
Tentative Schedule of Events.....	8
Leadership Opportunities.....	9
Program Overview.....	10
Informational Interviews.....	11
Student Advisory Council.....	12



**Nonprofit
Leadership
Alliance**

Certified to Change the World

Nonprofit Leadership Alliance
1100 Walnut Street, Suite 1900
Kansas City, MO 64106
www.nonprofitleadershipalliance.org

ABOUT AMI

The Alliance Management Institute (AMI) is a capstone experience for students seeking the Certified Nonprofit Professional (CNP) credential. The purpose of the conference is to expose future social sector leaders to a vibrant learning experience that promotes best practices, innovative thinking and awareness of the full scope of the sector.

What can **AMI** do for you?

For Nonprofit Students

1. Fulfill the requirement for the Certified Nonprofit Professional (CNP) credential
2. Network with other nonprofit students and professionals

For Campus Directors

1. Connect with a group of peers for idea sharing
2. Grow the Nonprofit Leadership Alliance Student Network

For Professionals

1. Network with local, regional and national nonprofit leaders
2. Recruit emerging nonprofit professionals

For CNPs

1. Stay connected to the Nonprofit Leadership Alliance network through the Association of Certified Nonprofit Professionals
2. Attend advanced workshops in the nonprofit field



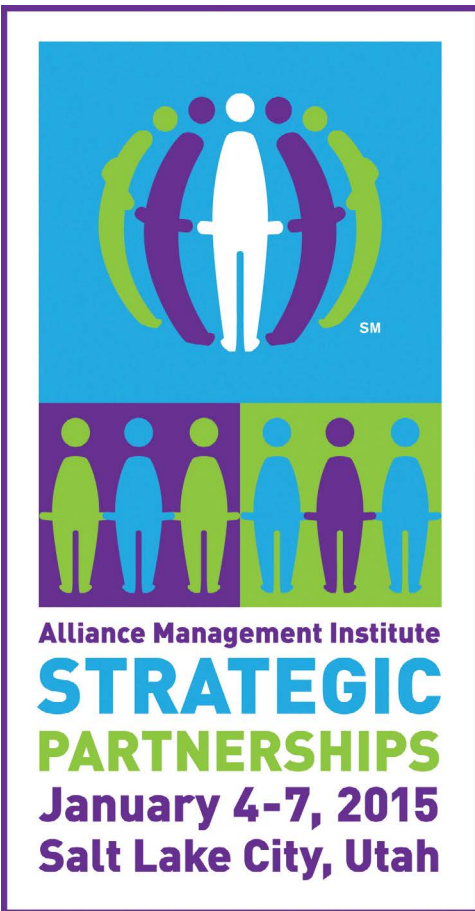
**Nonprofit
Leadership
Alliance**

Certified to Change the World



AMI is a memorable experience of learning, networking and sharing to support the advancement of the sector and its future leaders.

AMI 2015 THEME



We know the drill: There is intense demand for the work of nonprofits – yet limited resources to go around. How do we make the most of those resources so that we can have the greatest impact in our communities?

The answer is
**STRATEGIC
PARTNERSHIPS.**

Join us at AMI 2015 as we explore how innovative nonprofits are creating strategic alliances that help their organizations go farther, faster. Participants will learn about different partnership structures, how to vet potential partners and how you as nonprofit professionals can align your community assets – individuals, corporations, foundations and other nonprofits – to ensure your organization is getting results.



Partner with students, nonprofit professionals, and academic faculty
January 4-7, 2015 in Salt Lake City!

SALT LAKE CITY

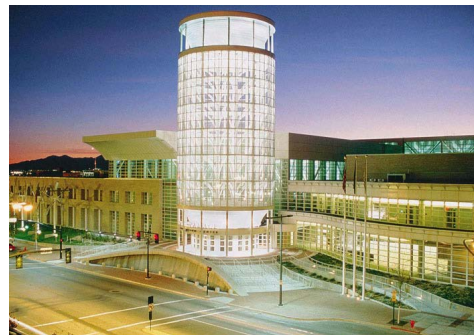


**The Nonprofit Leadership Alliance
Welcomes You to
Salt Lake City, Utah!**

**Ranks #1 in charitable contributions
among metropolitan areas**

45% of residents volunteer

AMI 2015 will be at the **Salt Palace Convention Center**. It is a modern facility capable of hosting a wide variety of events. Its S.O.A.R. initiative is an in-house program that reaches out to serve the community and protect the environment while focusing on safety and excellent service to its clients.



Attendees will be staying in the **Salt Lake City Marriott Downtown at City Creek**, just across the street and within walking distance of shopping, restaurants and nightlife. Also located in the heart of the city is **City Creek Mall**, SLC's premier shopping and dining destination, with 110 stores and restaurants.

HOTEL ADDRESS

**Salt Lake City Marriott Downtown
at City Creek
75 S. West Temple
Salt Lake City, UT 84101**



NEARBY SKIING:

Park City
Snowbird
Alta

Brighton
Solitude
Sundance



SIGHTSEEING

Temple Square
LDS Humanitarian Center
Hogle Zoo

The Great Salt Lake
Living Planet Aquarium
Thanksgiving Point

TRAVEL INFORMATION

TRANSPORTATION OPTIONS

Plane: Salt Lake City International Airport

(Airport Code: SLC)

Train: Amtrak

(Salt Lake City- SLC; Address: 340 S 600 W,
Salt Lake City, UT 84101)

Bus: Greyhound

(Address: Salt Lake City Greyhound Station,
300 S 600 W, Salt Lake City, UT 84101)



DIRECTIONS TO HOTEL*

From the Salt Lake City Airport

Take the green line TRAX Rail at Airport Station heading to "West Valley;" Exit at Temple Square Station; Walk east on W South Temple, turn right on S West Temple to arrive at hotel

From the Amtrak Station

Take the 701 Blue Line Train to Draper; Exit at Temple Square Station; Walk east on W South Temple, turn right on S West Temple to arrive at hotel

From the Greyhound Station

Head south on S 600 W (toward W Broadway) to the Salt Lake Central Station; take the 701 Blue Line Train to Draper; Exit at Temple Square Station; Walk east on W South Temple, turn right on S West Temple to arrive at hotel

*Directions are given using public transportation

HOTEL RESERVATIONS

The special AMI rate is
\$109/night, plus tax
(if made before 12/12/2014)

To reserve online: visit
<http://bit.ly/amihotelreservation>

To reserve by phone:
Call 1-801-531-0800 and
mention you are attending AMI



**Nonprofit
Leadership
Alliance**

Certified to Change the World

REGISTRATION

1. In order to receive the discounted registration price, payment must be postmarked on or before the determined date.
2. All full conference registrations include dinner on Sunday, breakfast and lunch on Monday, and lunch and dinner on Tuesday.
3. Affiliated members include students and faculty from campus partners, national nonprofit partner professionals and CNPs.
4. All Monday-only registrations include breakfast and lunch.

	Early Registration Open through 10/24/14	Regular Registration 10/25/14 - 12/12/14	Late Registration 12/13/14 - 1/4/15
Affiliated Registration	\$325	\$375	\$450
Affiliated Members- Monday-Only	\$150	\$200	\$250
Non-Affiliated Students and Faculty	\$625	\$625	\$625
Community Members- Monday-Only	\$200	\$250	\$300
Opening Breakfast Ceremony	\$100	\$100	\$100
Closing Dinner Ceremony	\$100	\$100	\$100
EXPO Booth	\$1,000	\$1,000	\$1,000



**Nonprofit
Leadership
Alliance**

Certified to Change the World

Registration opens
in the fall.
Watch for more
information!

TENTATIVE SCHEDULE

Alliance Management Institute (AMI) 2015 Tentative CNP Schedule

Sunday, January 4th

10:00am	Registration Opens
10:00am - 12:30pm	Informational Interviews*
10:00am - 6:00pm	Career and Resource EXPO
3:00pm - 5:30pm	Quick-fire Sessions for Career Development
6:00pm - 8:00pm	Networking Dinner Stations*
8:00pm - 9:00pm	Yoga

Monday, January 5th

7:30am - 6:30pm	Career and Resource EXPO
8:00am - 9:45am	Plenary and Breakfast with Case Study Hosts & Facilitators
10:00am - 11:15am	Workshops: CNP Competencies – Round 1 (75mn)
11:30am - 12:15pm	Workshops: CNP Competencies – Round 2 (45mn)
12:15pm - 2:30pm	Career and Resource EXPO Event
12:15pm - 2:30pm	Lunch at Local Restaurants
1:00pm - 2:15pm	Association of Certified Nonprofit Professionals Meeting with all CNPs
2:30pm - 3:45pm	Workshops: CNP Competencies – Round 3 (75mn)
4:00pm - 5:15pm	Workshops: CNP Competencies – Round 4 (75mn)
4:00pm - 6:30pm	Informational Interviews*
5:30pm - 6:30pm	Poster Presentations*
6:00pm - 7:30pm	CNP Networking Event Hosted by the Association of Certified Nonprofit Professionals
7:30pm	Dinner-on-your-own (free evening to explore Salt Lake City)

Tuesday, January 6th

8:00am - 10:00am	Morning Plenary
10:00am - 5:00pm	Case Study Experience*
6:00pm - 8:00pm	Closing Dinner and Awards Ceremony*
8:00pm	Closing Celebration

Wednesday, January 7th

8:00am - 12:00pm	Informational Interviews*
9:30am - 11:30am	Student Leadership Session
12:00pm	Conference End



**Indicates areas where CNPs can take a leadership role in student programming*

For updated information visit: www.amiconference.org

LEADERSHIP OPPORTUNITIES

Informational Interviews

Certified Nonprofit Professionals who have worked five or more years in the nonprofit sector and currently hold a position at a nonprofit organization may sign up to be an Informational Interviewer. These interviews allow students to discover more about different nonprofit organizations, develop their interviewing skills and broaden their professional network.

Networking Dinner Stations

Institute attendees will have the opportunity to network throughout dinner on Sunday night. We will contact CNPs who have registered for the Institute to discuss how we would like to incorporate CNPs into programming on this evening.

Workshops

Workshops will be designated for mastery level content intended for graduate students, CNPs and nonprofit professionals. Watch for those designations when you register!

Poster Session Judge

The 2015 Poster Session at the Alliance Management Institute is designed to allow students to showcase either a best practice representing their Nonprofit Leadership Alliance Student Association program, or research conducted in one or more of the Alliance competency areas. CNPs are invited to help judge the student poster sessions on January 5th at 5:30pm. Scoring rubrics are provided.

Case Study

CNPs are invited to be case-study facilitators on January 6th. Facilitators are responsible for traveling to and from the host site with the students and keeping the group on task during the case study. Facilitators can serve as a reference and are available for additional input when students look for feedback for their ideas.

Association of Certified Nonprofit Professionals Executive Committee Meeting

All CNPs are invited to participate in the ACNP meeting during lunch on Monday, January 5th. There you can learn about important steps being made to establish the Association of Certified Nonprofit Professionals as a nationally-recognized professional association. This will be an open forum discussion format to engage CNPs for developing a strategic focus and planning for growth.



CNP Networking Event Hosted by the Association of Certified Nonprofit Professionals

This is an exclusive opportunity for CNPs to engage with other CNPs from their area and across the nation.

PROGRAM OVERVIEW

Before you register, understand the program content of AMI: the sessions you will be attending and their relevance to the nonprofit sector. Below is a general overview to help you understand and register successfully.

Case Studies

The most highly rated component of AMI is the case study experience. Working as consultants, groups of CNP students fan out across the AMI host community to help nonprofits tackle strategic challenges. With input from the nonprofits, students discuss the challenges and propose solutions to the nonprofit's leadership.

Workshops

Students attend professional-level workshops grounded in the CNP competencies. They learn how to increase program effectiveness, engage communities, understand sector trends, strengthen accountability and develop their careers. Because workshops are taught by professionals, students learn skills that are directly applicable in today's nonprofit workplace.

Informational Interviews

AMI allows students and nonprofit professionals to participate in informational career development interviews and open position interviews with national nonprofit partners. During informational interviews, professionals will assess your resume and cover letter, as well as answer questions you may have about the interview process or their organizations. For more information, please see page 11.

Career and Resource EXPO

AMI provides our nonprofit partners with a "golden opportunity" to create awareness of their missions and career opportunities among more than 600 college students who are ready to begin their nonprofit sector careers. EXPO booths feature information about each organization's target population, programs and services. Campuses feature their student association activities and graduate programs.

Plenaries

In addition to networking with each other and nonprofit professionals in the field, students at AMI hear from the sector's most prominent leaders. At plenary sessions, all conference attendees are exposed to topics that help them further understand the nonprofit sector, as well as get fired-up to go out and change the world!

INFORMATIONAL INTERVIEWS

What Are Informational Interviews?

The goal is to provide one-on-one face time with students allowing them to discover more about your organization, to develop interviewing skills and to broaden their professional network.



What to Expect from Informational Interviews

These are student-led interviews. They come to you prepared with questions to ask about your organization and seek professional advice on resumes. In these sessions you will have 20 minutes with each student and the time passes quickly. Perhaps you have vacancies in your organization and you meet your next great hire; feel free to invite the student to chat more throughout the conference. This is a time to share your experiences and provide practical advice with future nonprofit leaders, and they are eager to meet you.

When Are Informational Interviews?

Sunday, January 4th from
10:00 a.m. - 12:30 p.m.

Monday, January 5th from
4:00 p.m. - 6:30 p.m.

Wednesday, January 7th from
8:00 a.m. - 12:00 p.m.

*Interviews are only 20 minutes,
so come prepared and be on time.*

Interested in being an interviewer?

Please contact Jenna Cooper, Workforce Partners Executive, at jenna.cooper@nonprofitleadershipalliance.org or 816-463-9470



Certified to Change the World

Questions about AMI?

Check out www.amiconference.org or email ami@nonprofitleadershipalliance.org

STUDENT ADVISORY COUNCIL

The Student Advisory Council (SAC) is a team of future CNPs from campuses across the Nonprofit Leadership Alliance network who support AMI planning. These leaders volunteer their time to make AMI a success. Thank you to our 2015 SAC!



Elizabeth "Cathy" Baker
Registration Manager
Rockhurst University



Jenna Baker
Workshops and Plenaries
Assistant
Brigham Young University



Sean Clancy
Workshops and Plenaries
Assistant
Brigham Young University



Makenzie Court
Workshops and Plenaries
Assistant
Brigham Young University



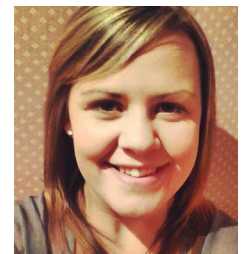
Alasdair (Kufre) Ekpenyong
Fundraising and Workshops
Assistant
Brigham Young University



Jillian Hicken
Lead Case Study Coordinator
Brigham Young University



Kelsey Mumm
Informational Interviews and
Expo Assistant
Missouri Valley College



Leah Simmons
Informational Interviews and
Expo Assistant
Missouri Valley College



Certified to Change the World



Emilee Wolfe
Communications and Poster
Presentations Assistant
Brigham Young University